

SUBDIVISION PLAN OF LOT 4, DL 134
 ODYD, PLAN 30130.

PLAN EPP117391

BCGS 82E.083
 SCALE 1:500 METRIC



The intended plot size of this plan is 432mm in width by 560mm in height (C-size) when plotted at a scale of 1:500 METRIC.

LEGEND

- Denotes Control Monument Found
- Denotes Standard Iron Post Found
- Denotes Standard Iron Post Set

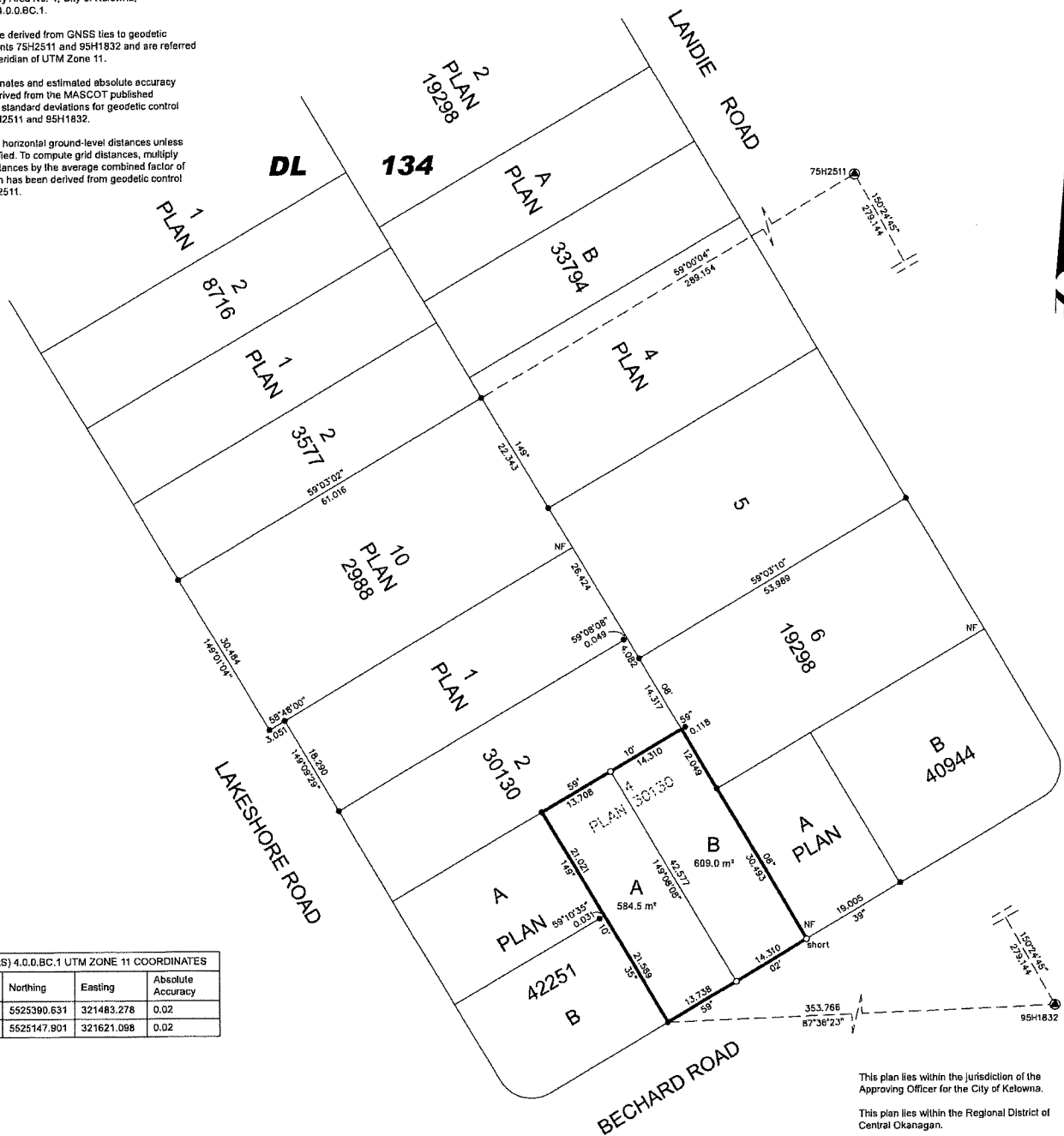
Distances shown are horizontal, ground-level distances, in metres and decimals thereof.

Integrated Survey Area No. 4, City of Kelowna,
 NAD83(CSRS) 4.0.0.BC.1.

Grid bearings are derived from GNSS ties to geodetic control monuments 75H2511 and 95H1832 and are referred to the central meridian of UTM Zone 11.

The UTM coordinates and estimated absolute accuracy achieved are derived from the MASCOT published coordinates and standard deviations for geodetic control monuments 75H2511 and 95H1832.

This plan shows horizontal ground-level distances unless otherwise specified. To compute grid distances, multiply ground-level distances by the average combined factor of 0.9998399 which has been derived from geodetic control monument 75H2511.



NAD83(CSRS) 4.0.0.BC.1 UTM ZONE 11 COORDINATES			
Point	Northing	Easting	Absolute Accuracy
75H2511	5525390.631	321483.278	0.02
95H1832	5525147.901	321621.098	0.02

AllTerra
 Land Surveying Ltd.
 www.AllTerraSurvey.ca
 Ph. 250.762.0122 Fax: 321091-50

This plan lies within the jurisdiction of the Approving Officer for the City of Kelowna.
 This plan lies within the Regional District of Central Okanagan.
 The field survey represented by this plan was completed on the 8th day of December, 2021.
 Simone Porcellato, BCLS #961